

# VITARA

## 24" French Door Wine Cooler VBWC4001SB



### Features

- Built-under or free standing installation
- 40 Bottles (20 on each side)
- Temperature range 39°F-68°F for left & right zone
- Interior air fan circulating
- Seamless SS door frame
- SS handle and kickplate
- Flat door
- 5 wooden shelves with SS front trim
- Electronic touch control with white LED readout
- LED interior lighting
- Anti-UV resistant glass door
- Two-layer glass door
- Slide-out roller
- Reversible door

| Model      | Lock | Finish          | Description                 |
|------------|------|-----------------|-----------------------------|
| VBWC4001SB | No   | Stainless Steel | 24" French Door Wine Cooler |

### Model Details

| Dimensions/Weight | Detail   | Dimensions/Weight   | Detail                       |
|-------------------|----------|---------------------|------------------------------|
| Product Depth     | 22 5/16" | Product Volume      | 4.5 Cubic Feet               |
| Product Height    | 34"      | Shipping Dimensions | W 26" X D24 1/4" X H36 1/16" |
| Product Width     | 23 7/16" | Shipping Weight     | 101 lbs                      |
| Product Weight    | 92 lbs   |                     |                              |



[www.vitaraamerica.com](http://www.vitaraamerica.com) | 1.800.299.3406  
MG Home Solution LLC

100 Illinois Street, Suite 200, St Charles, IL 60174

MG Home Solution LLC warrants to the original purchaser of its VITARA Wine & Bev products that they will be free from defects in materials and workmanship for the following time periods from the date of purchase shown on the sales receipt: Two (2) Years Parts & On-Site Labor. See complete warranty for details.

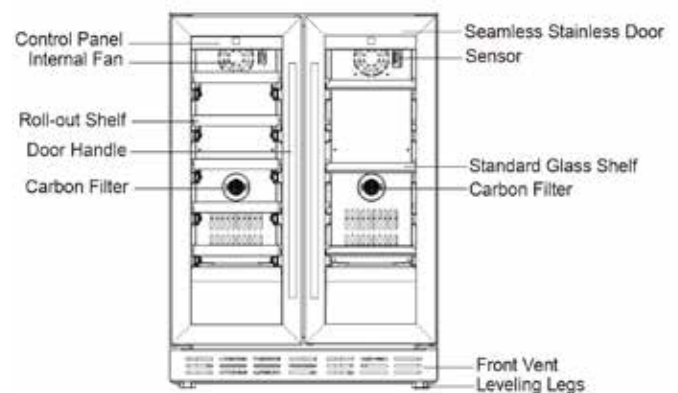
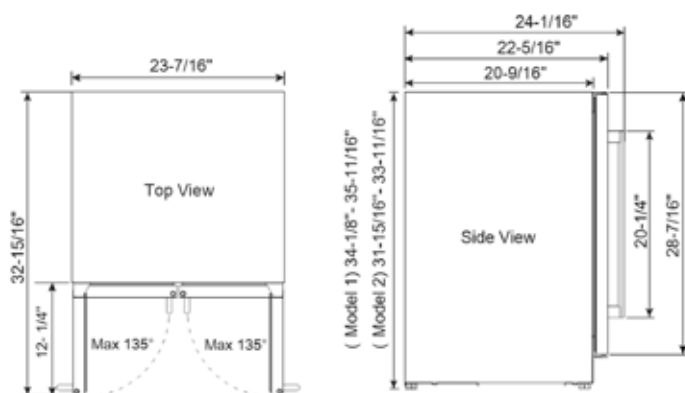
| Model                 | Detail                    |
|-----------------------|---------------------------|
| Control Type          | Electronic Touch Controls |
| Indoor or Outdoor     | Indoor                    |
| Built-in Installation | Built in or Free Standing |
| Refrigerant Type      | R600a                     |

| Electrical              | Detail      |
|-------------------------|-------------|
| Electrical Requirements | 110V/60Hz   |
| Volt Range              | 104V - 127V |
| Electrical Service      | 15 Amps     |
| Running Amps            | 0.7 Amps    |

| Capacities            | Detail   |
|-----------------------|--|
| 25 oz Bottle Capacity | 40 Bottles ( Bordeaux style) - 20 on each side |

| Approvals/Certifications   | Detail |
|----------------------------|--------|
| ETL Residential/Commercial | Yes    |

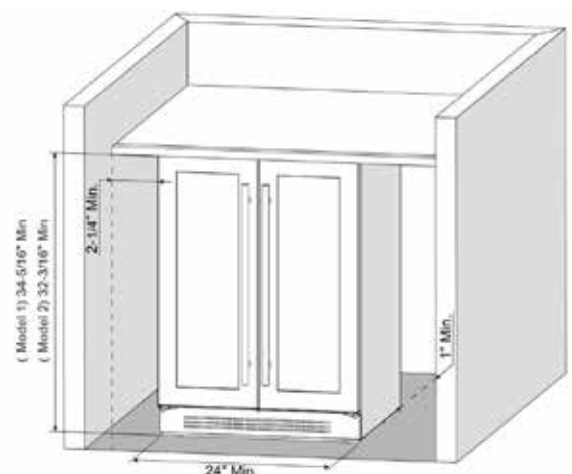
## Installation Instructions



### Installation Clearance Requirements

When installing the beverage cooler under a counter, follow the recommended spacing dimensions shown.

- For proper clearance of the electrical plug, allow at least 1" of clearance at the back as shown in the diagram.
- An installation next to a wall will require a minimum 2-1/4" door clearance to accommodate the handle.
- The cabinet should allow at least 24" for the width and 34-1/4" for the height to accommodate the beverage cooler.
- The power cable is located on the back right of the unit and has a length of 72" to accommodate multiple outlet locations.
- Once you are ready to install the unit, you must adjust the feet to level the beverage cooler.
- The installation should allow the unit to be pulled forward for servicing, if necessary.



www.vitaraamerica.com | 1.800.299.3406  
 MG Home Solution LLC

100 Illinois Street, Suite 200, St Charles, IL 60174

MG Home Solution LLC warrants to the original purchaser of its VITARA Wine & Bev products that they will be free from defects in materials and workmanship for the following time periods from the date of purchase shown on the sales receipt: Two (2) Years Parts & On-Site Labor. See complete warranty for details.